



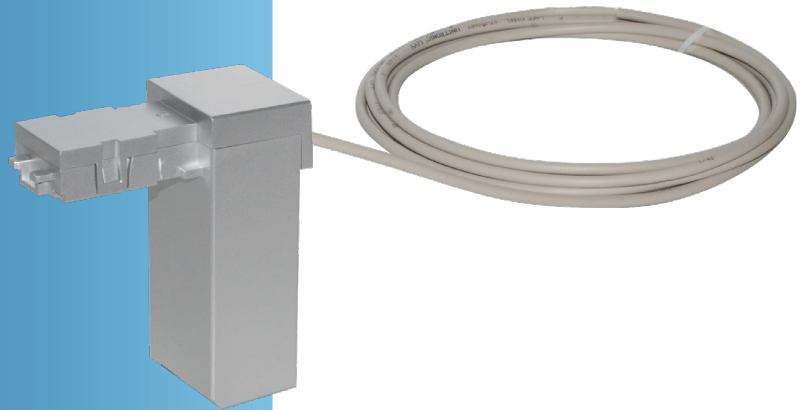
Water

GWF

GWF4D technology®

ECO MODULE

SONICO®
NFC-Communication module



Your benefits

- > Volume and S/N information:
[Standard GWF encoder ECO protocol](#)
- > High adaptivity:
[Works with GWF LoRaWAN™ and M-Bus modules](#)
- > Water proof design:
[Sealed housing \(IP68\)](#)
- > Plug & Play:
[Easy and fast on-site installation with auto NFC interface-detection](#)

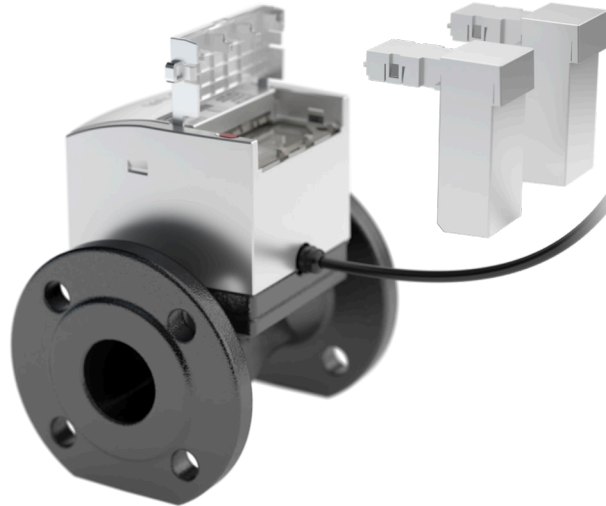
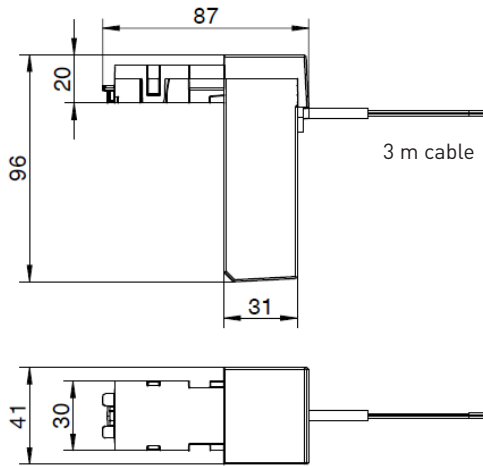
Features

- > Battery powered ECO module
- > Simple installation and automatic start-up after connecting to meter
- > Continuous and tamper-proof connection, thoroughly reliable results
- > Can be factory fitted or retrofitted at installation site without breaking metrological seal
- > Compatible with all versions of SONICO® meters
- > Data security via AES-128-bit end-to-end encryption
- > Snap-in NFC module slots – no connectors or cables needed
- > **CE** Approval

Applications

- > Industrial application
- > Building management system
- > Data logging in combination with various data loggers
- > Installation in harsh and flooded environment

Dimensions (mm)



Technical data

Specifications	
Approval	CE
Protection class	IP68
Protocol content	S/N and cumulative volume
Cable length/ supplied	3 m including cable joint for cable extension
Maximum cable length	30 m
Weight	Approx. 250 g

Power supply	
Battery	1 x Lithium Li/SOCL2 A size (not replaceable)
Typical battery lifetime	15 years (depending on environment) with 15 min read out cycles

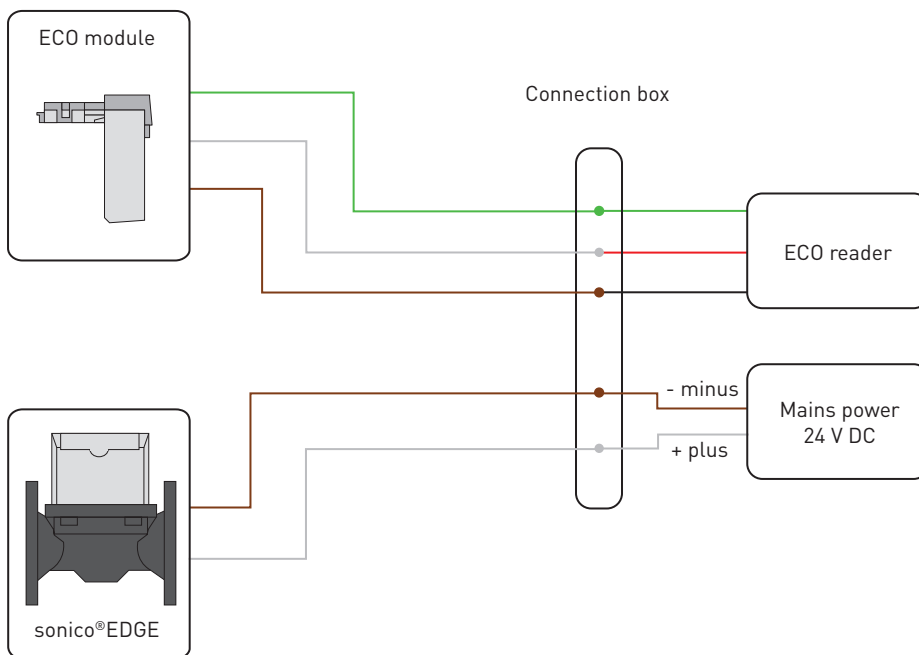
Conditions	
Operational and storage temperature	-25 to +70 °C
Storage temperature	-25 to +70 °C
Relative humidity	0 to 100 % (IP68)

OUTPUT + CONNECTION → ECO MODULE

Example of data package

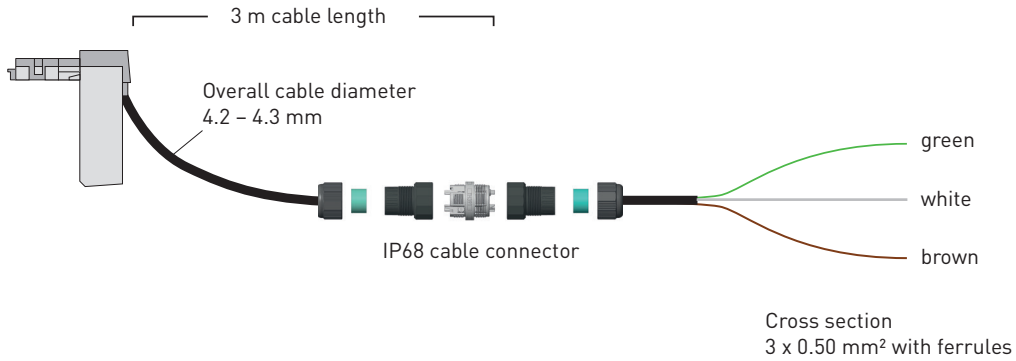
Information data package	Data Example
Manufacturer	GWF
Medium	Water
Version	19
Meter serial number	123456789
Current cumulative volume	00189.010 m ³
Status	0 x 00: no error 0 x 02: no NFC connection

Electrical scheme



OUTPUT + CONNECTION → ECO MODULE

Cable connection



GWF

GWF MessSysteme AG
Obergrundstrasse 119
6005 Lucerne, Switzerland

T +41 41 319 50 50
info@gwf.ch

Technical support
T +41 41 319 52 00
support@gwf.ch

→ [gwf.ch](https://www.gwf.ch)